

Carrière de BRS  
 Aywaille -6  
 Tir du 07/11/2023  
 Sismographe placé au  
 261 Halleux  
 4710 Comblain-au-Pont

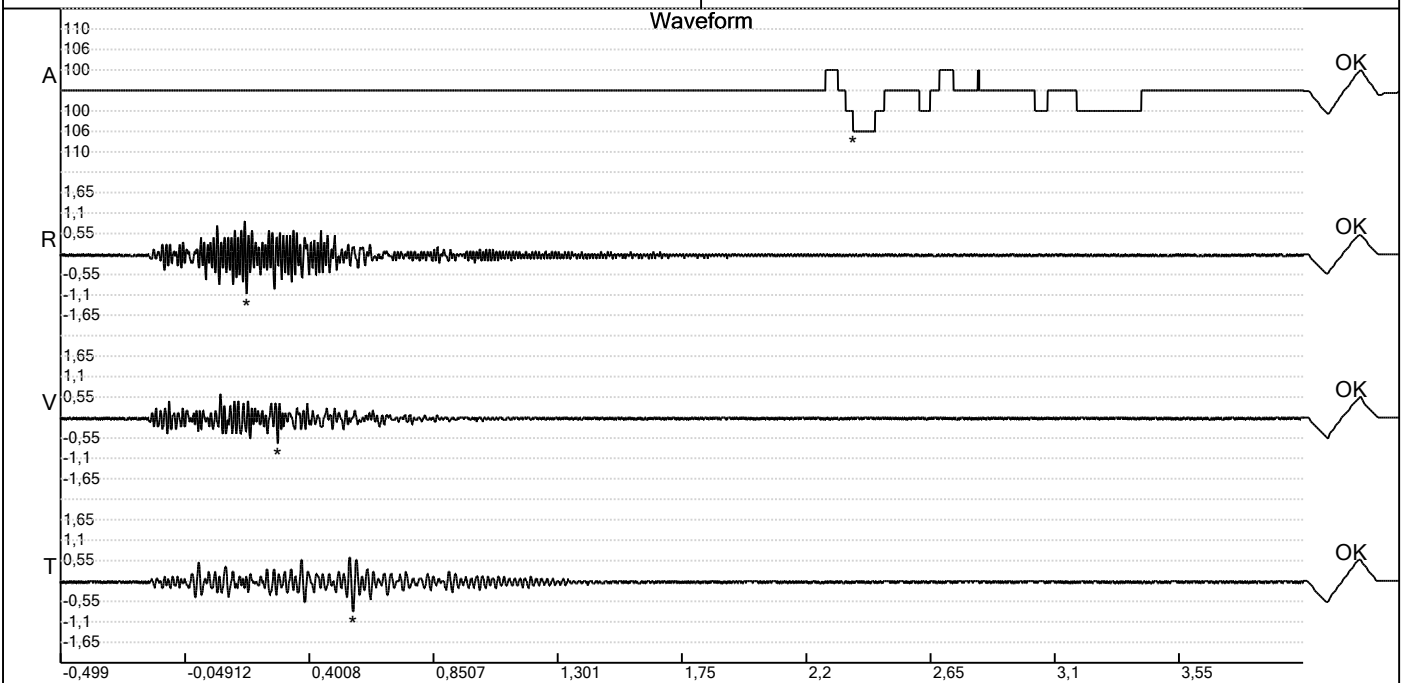
Record: 178920231107150258.dtb  
 Number: 058  
 Seismograph: Mini-Seis 1789  
 Type of Record: Waveform  
 Date: 07-11-23 15:02:00  
 Duration: 4,50 Seconds  
 Sample Rate: 1024  
 Pre-Trigger: 0,5 Seconds  
 Seismic Trigger: 0,51 mm/s  
 Acoustic Trigger: 142,1 dB  
 Seismic Gain: 63,5  
 Acoustic Gain: 141,9 dB  
 Voltage: 6,2

Peaks and Frequencies

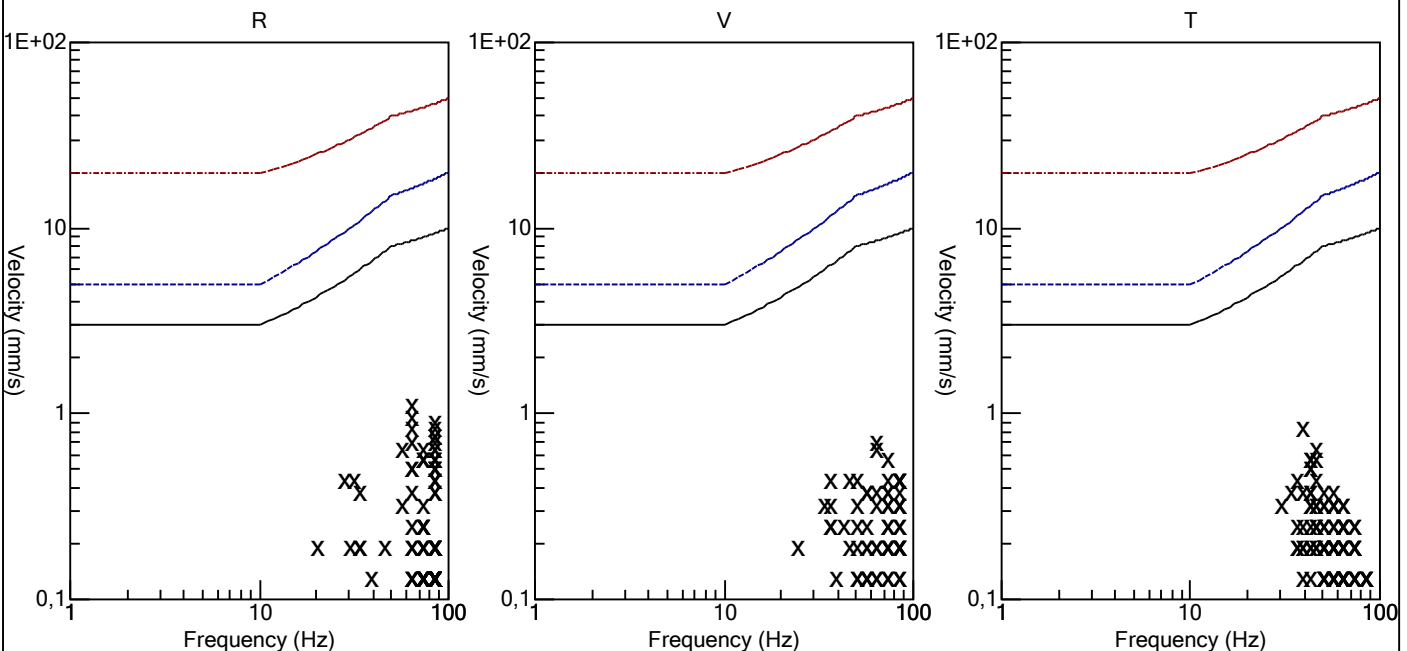
PPV Maximum (Geo #1): 1,1 mm/s  
 Acoustic #1: 106,0 dB @ 4,4 Hz (2,371094 s)  
 Radial #1: 1,1 mm/s @ 64,0 Hz (0,1748047 s)  
 Vertical #1: 0,7 mm/s @ 64,0 Hz (0,2871094 s)  
 Transverse #1: 0,83 mm/s @ 39,3 Hz (0,5595703 s)  
 Last Calibration Date:

Graph Information

Time Range: -0,499 s to 4 s, Intervals: 0,4499 Seconds



Velocity vs. Frequency (DIN 4150-3 Tab 1)



Carrière de BRS  
 Aywaille -6  
 Tir du 07/11/2023  
 Sismographe placé au  
 261 Halleux  
 4710 Comblain-au-Pont

Record: 178920231107150258.dtb  
 Number: 058  
 Seismograph: Mini-Seis 1789  
 Type of Record: Waveform  
 Date: 07-11-23 15:02:00  
 Duration: 4,50 Seconds  
 Sample Rate: 1024  
 Pre-Trigger: 0,5 Seconds  
 Seismic Trigger: 0,51 mm/s  
 Acoustic Trigger: 142,1 dB  
 Seismic Gain: 63,5  
 Acoustic Gain: 141,9 dB  
 Voltage: 6,2

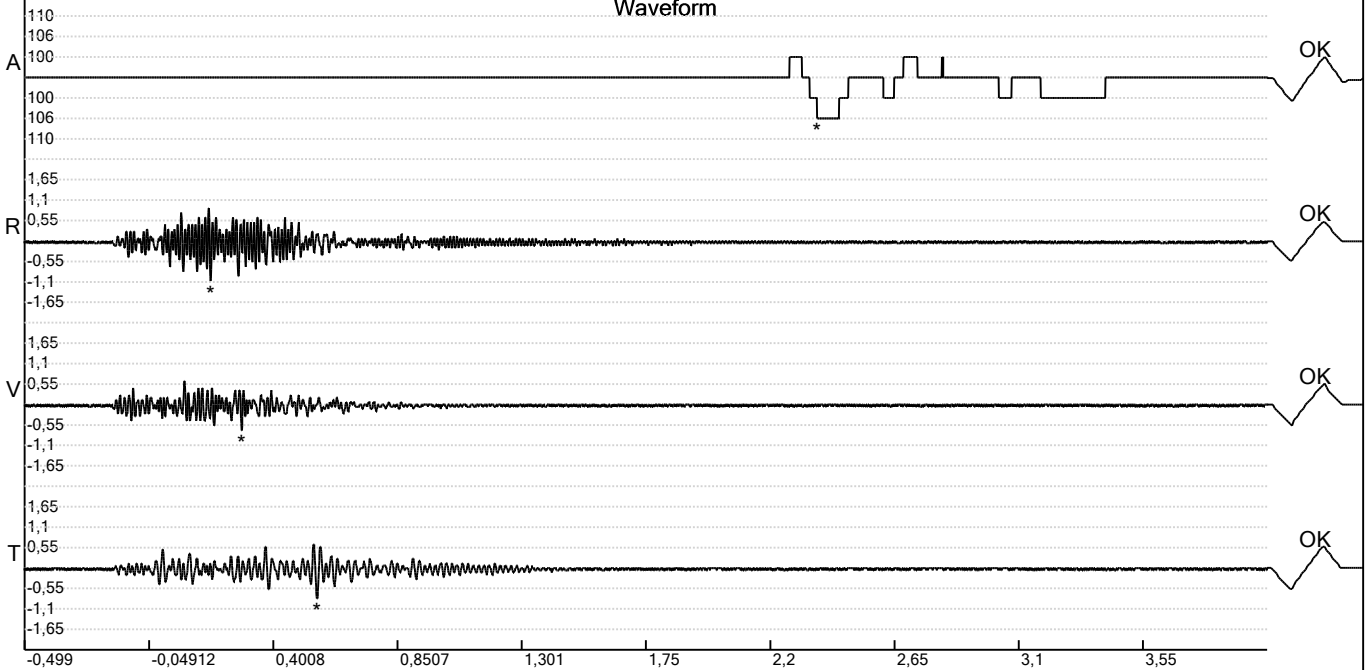
Peaks and Frequencies

PPV Maximum (Geo #1): 1,1 mm/s  
 Acoustic #1: 106,0 dB @ 4,4 Hz (2,371094 s)  
 Radial #1: 1,1 mm/s @ 64,0 Hz (0,1748047 s)  
 Vertical #1: 0,7 mm/s @ 64,0 Hz (0,2871094 s)  
 Transverse #1: 0,83 mm/s @ 39,3 Hz (0,5595703 s)  
 Last Calibration Date:

Graph Information

Time Range: -0,499 s to 4 s, Intervals: 0,4499 Seconds

Waveform



Fast Fourier Transform (Amplitude Spectrum)

A - 1,1 (8,4892)

R - 80,0 (129,6128)

V - 59,9 (129,6128)

T - 50,5 (129,6128)

